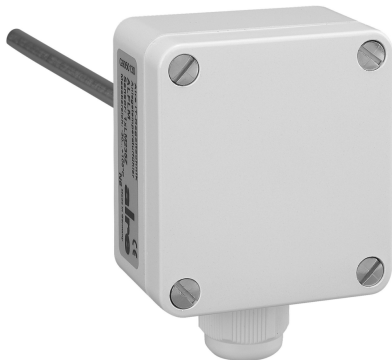


Datasheet EKFP 1000/100

Articlenumber: G9140150

Built-in duct temperature sensor, PT1000, installation length 115mm

The EKF installation duct sensors are used to measure temperatures in liquids and gases in pipes, air ducts or containers. The mounting flange (MF) is required for use in air ducts. Nickel-plated brass thermowells (THMs) must be used for use in liquids. Immersion sleeves made of stainless steel V4A (THV) are recommended for aggressive media. Thermowells or mounting flanges are not included in the scope of delivery and must be ordered separately as accessories.



Active temperature measurement	No
Ambient temperature	?30 ... 70 °C
Bearing temperature	–30 ... 70 °C
Colour	Pure white
Connection cross-section	0,14 – 2,5 mm²
Cover fastening	Bayonet fastening
Dimensions (W x H x D)	58 mm x 64 mm x 149 mm
Electric connection	Screw terminals
Housing material	Plastic PA
Length of sensor	100 mm
Max. air humidity (non-condensing)	95 % r.H.
Montage/Befestigung	In imm. sleeve, prot. coil, on tube, etc
Passive temperature measurement	Yes
Plug-in length	115 mm
Protection class	III
RAL colour number (similar)	9010
Safety and EMC	In accordance with DIN EN 60730

Sensor element	PTC internal
Sensor element inside the housing	No
Sensor element outside the housing	Yes
Sensor type	PT-1000
Suitable for duct mounting	Yes
Suitable for fluids	Yes
Suitable for gases	Yes
Suitable for pipe mounting	Yes
Surface finish	Gloss
Version of sensor	Temperature sensor for gases/liquids
With explosion protection	No
With housing	Yes
With supply line	No

