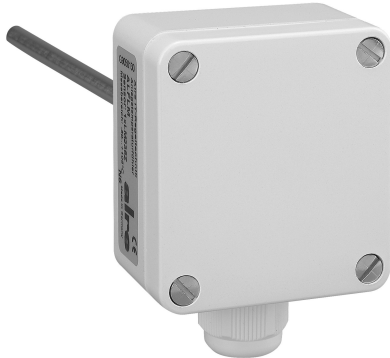


Datasheet EKFP 100/100

Articlenumber: G9140140

Built-in duct temperature sensor, PT100, installation length, 115mm



Active temperature measurement	No
Ambient temperature, lower value	-30 °C
Ambient temperature, upper value	70 °C
Bearing temperature, lower value	-30 °C
Bearing temperature, upper value	70 °C
Colour	Pure white
Connection cross-section	0,14 mm ² bis 2,5 mm ²
Cover fastening	Bayonet fastening
Electric connection	Screw terminals
Housing material	Plastic PA (30 % GF reinforced)
Length of sensor	100 mm
Maximum air humidity (non-condensing)	95 % r.H
Mounting / attachment	In imm. sleeve, prot. coil, on tube, etc
Passive temperature measurement	Yes
Plug-in length	115 mm
Protection class	III
RAL colour number (similar)	9010
Safety and EMC	In accordance with DIN EN 60730
Sensor element	PTC internal
Sensor element inside the housing	No

Sensor element outside the housing	Yes
Sensor type	PT-100
Suitable for duct mounting	Yes
Suitable for fluids	Yes
Suitable for gases	Yes
Suitable for pipe mounting	Yes
Surface properties	Gloss
Temperature measuring range lower value	-30 °C
Temperature measuring range upper value	150 °C
Version of sensor	Temperature sensor for gases/liquids
With explosion protection	No
With housing	Yes
With supply line	No

