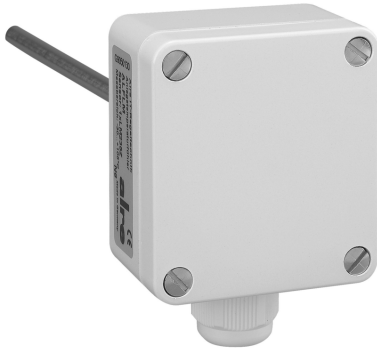


Typ: EKFP 1000/100



Art.-No.: G9140150

Features:

Integrated channel temperature sensor, nominal length 100 mm, PT1000 class B, 2-conductor

Application:

Technical Data:

Dimensions of housing:	64 x 58 x 34 mm
Fitting length:	115 mm
Electrical connection:	Screw-type terminals 0,14 mm ² to 2,5 mm ² only at safety extra-low voltage max. 30VAC / 42VDC, 2-conductor
Colour of housing:	pure white, like RAL 9010
Sensor:	PTC internal
Sensor wire extendable up to:	depending on the cross-section of the conductor and the sensor type
Sensor type:	PT-1000
Weight:	ca. 100
Storage temperature:	-30...+70 °C
Material of housing:	Plastic PA (30% GF reinforced)
Material of sensor tube:	V2A (1.4301)
max. sensor temperature:	150
max. measurement current:	
Installation/fastening:	in immersion sleeve (THMs, THV) for fluids or with mounting flange (MF) in air channels
Surface quality:	matt
Degree of protection:	IP 65
Protection class:	III
Sensor characteristic curves:	The sensor characteristic curves can be found under Miscellaneous
Safety and EMC:	according to DIN EN 60730

Immersion sleeves: from the fitting length (EL), subtract 15 mm to determine the nominal length (NL) of the immersion sleeve, for example, EL = 65 mm corresponds to THV/50

Tolerance: DIN EN 60751 B

Ambient temperature up to: 70

Ambient temperature from: -30

Accessories: Mounting flange for installation in air channels: MF suitable immersion sleeves, brass: THMs can be found under Miscellaneous suitable immersion sleeves, special steel (V4A): THV can be found under Miscellaneous

Permissible atmospheric humidity: max. 95% r.h., non-condensing

Circuit Diagram:

