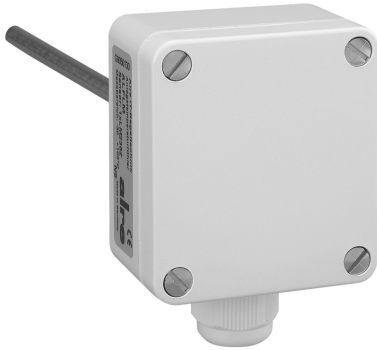


# Typ: EKFP 100/150



**Art.-No.:** G9140270

## **Features:**

Integrated channel temperature sensor, nominal length 150 mm, PT100 class B, 2-conductor

## **Application:**

## **Technical Data:**

Dimensions of housing:	64 x 58 x 34 mm
Fitting length:	165 mm
Electrical connection:	Screw-type terminals 0,14 mm <sup>2</sup> to 2,5 mm <sup>2</sup> only at safety extra-low voltage max. 30VAC / 42VDC, 2-conductor
Colour of housing:	pure white, like RAL 9010
Sensor:	PTC internal
Sensor wire extendable up to:	depending on the cross-section of the conductor and the sensor type
Sensor type:	PT-100
Weight:	ca. 100
Storage temperature:	-30...+70 °C
Material of housing:	Plastic PA (30% GF reinforced)
Material of sensor tube:	V2A (1.4301)
max. sensor temperature:	150
max. measurement current:	
Installation/fastening:	in immersion sleeve (THMs, THV) for fluids or with mounting flange (MF) in air channels
Surface quality:	matt
Degree of protection:	IP 65
Protection class:	III
Sensor characteristic curves:	The sensor characteristic curves can be found under Miscellaneous
Safety and EMC:	according to DIN EN 60730

